



EQUIPMENT
CATALOG
2020



CHAIN DRIVE SPROCKETS
CHAIN GUIDE RAILS & TENSIONERS
GEARS
TERMOPLASTIC GEAR
PULLEYS
CLAMPING ELEMENTS
COUPLINGS
BALL FLANGE BEARINGS & RODS ENDS









SCHIKI

MOVING YOU FORWARD.

CHAIN GUIDE RAILS AND TENSIONERS

		PAGE
	CHAIN TENSIONERS - RUBBER SUSPENSION UNIT	105
	CHAIN GUIDE RAILS IN POLYETHYLENE	117






GEARS

	CYLINDRICAL GEARS	120
	CYLINDRICAL GEARS WITH HARDENED TEETH	129
	CYLINDRICAL GEARS INOX	132
	RACKS - CONTINUOUS MOUNTING	135
	CONICAL STRAIGHT TOOTHED GEARS TYPE - A - B	136
	CONICAL SPIRAL TOOTHED GEARS	142

TERMOPLASTIC GEARS

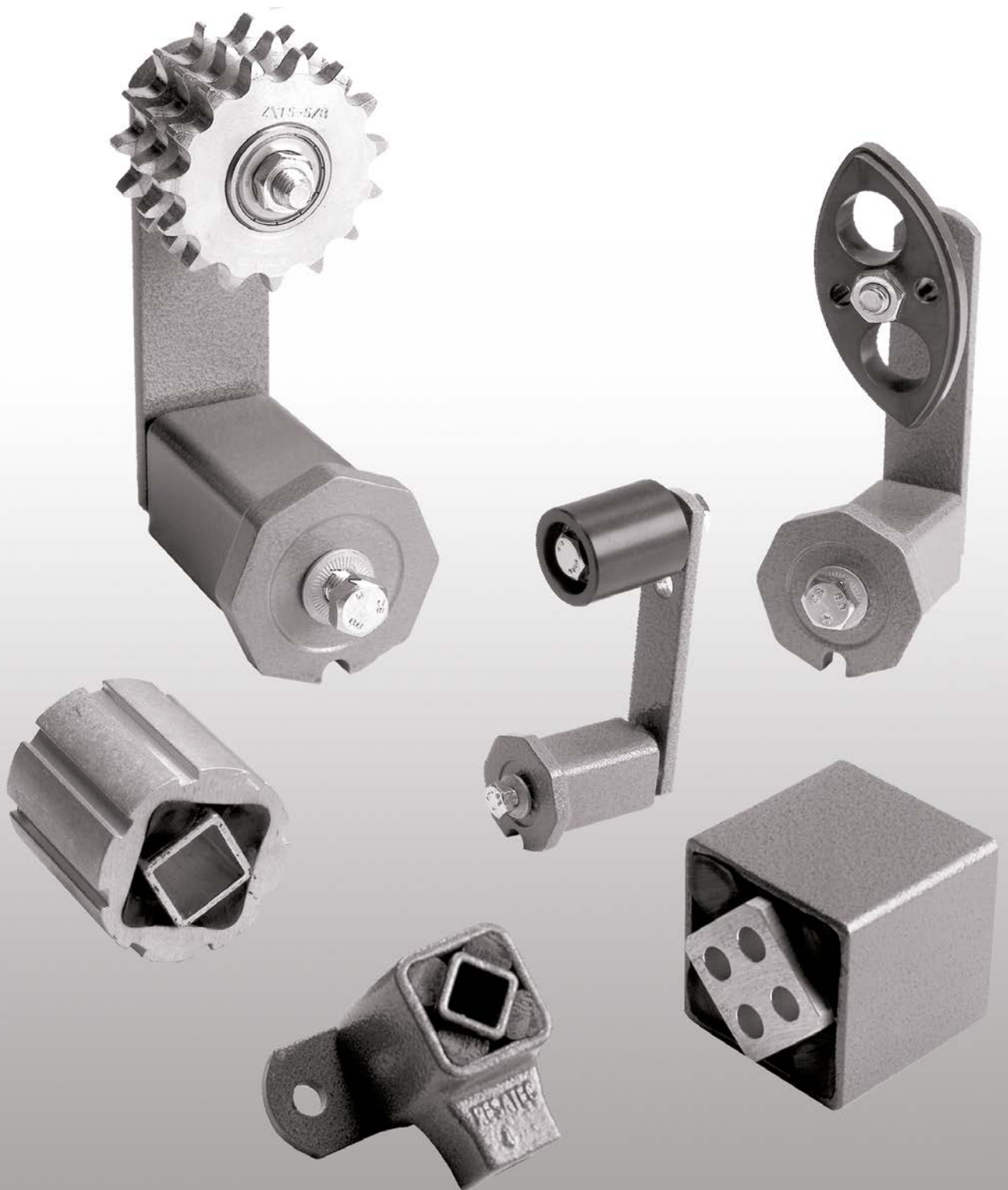
	THERMOPLASTIC GEARS	146
---	---------------------	------------

PULLEYS

	TIMING BELT PULLEYS	156
	TIMING BELT PULLEYS FOR TAPER BUSHES	168
	HTD® TIMING BELT PULLEYS	175
	HTD® TIMING BELT PULLEYS FOR TAPER BUSHES	189
	“PCB” SYNCHROCHAIN TIMING BELT PULLEYS FOR TAPER BUSHES	199
	METRIC PULLEYS	208



SCHIKI
MOVING YOU FORWARD



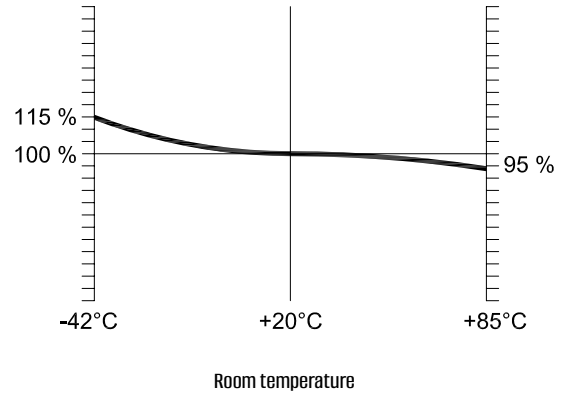
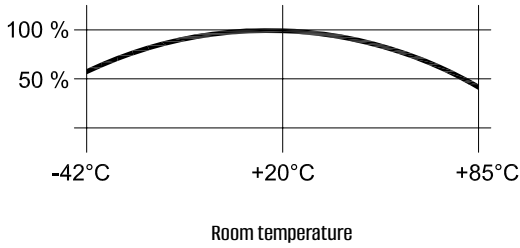
Characteristics of the rubber suspension units

	<p>Large operating angle</p>		<p>Noise and vibration damping</p>
	<p>Progressive spring characteristics</p>		<p>Resistant to temperature</p>
	<p>Safe use in any position</p>		<p>Maintenance free</p>

Instructions for a proper mounting of the chain tensioner (TEKS) and of the belt tensioner (TERE)

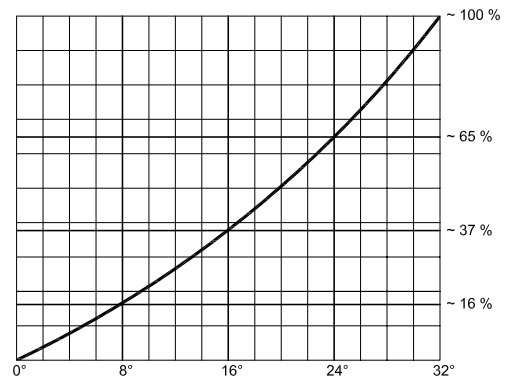
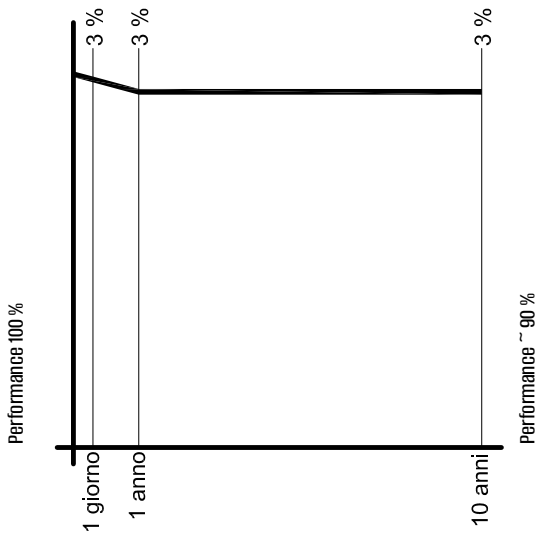
<p>Tensioner on the loose side</p>	<p>With reversible engine mount 2 tensioners</p>	<p>Mounting with belt transmission with V profile</p>

Characteristics of the rubber



Temperature influence: service life (under normal conditions) ~ 10 years

Temperature influence: torque reaction (N/m)



Torque determination "in percentage"

Could flow and setting

This chart is applicable to all type of: LTK-S, LTK-A, LTS, LTA

Example for determinating LTS 6-80 with torque M 215 with Nm a 32° (page 150)

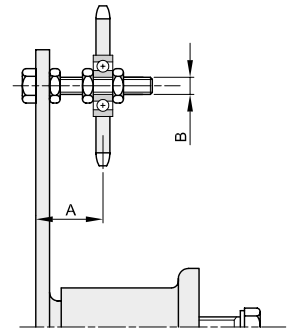
With an angle of 15° = 35% = ~ 75 Nm

With an angle of 22° = 56% = ~ 120 Nm

With an angle of 28° = 81% = ~ 174 Nm

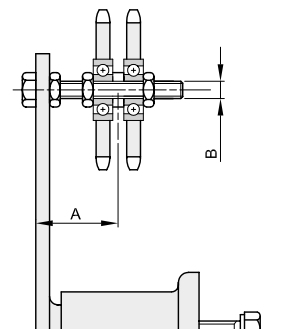
Single

description	chain	code	ISO	teeth	A	B	Kg.
TEKS 3	3/8" x 7/32"	6020110330	06B1	15	20 ÷ 50	M10	0,60
TEKS 3	1/2" x 5/16"	6020110340	08B1	15	20 ÷ 50	M10	0,65
TEKS 5	5/8" x 3/8"	6020110350	10B1	15	26 ÷ 67	M12	2,32
TEKS 5	3/4" x 7/16"	6020110360	12B1	15	26 ÷ 67	M12	2,55
TEKS 6	1" x 17,02	6020110380	16B1	13	37 ÷ 102	M20	5,00
TEKS 7	1"1/4 x 3/4"	6020110400	20B1	13	39 ÷ 122	M20	8,55
TEKS 7	1"1/2 x 1"	6020110420	24B1	11	39 ÷ 142	M20	8,90



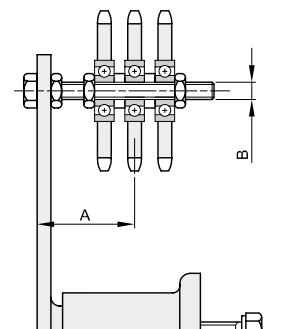
Double

description	chain	code	ISO	teeth	A	B	Kg.
TEKS 3	3/8" x 7/32"	6020120330	06B2	15	25 ÷ 44	M10	0,65
TEKS 4	1/2" x 5/16"	6020120340	08B2	15	27 ÷ 43	M10	1,15
TEKS 5	5/8" x 3/8"	6020120350	10B2	15	34 ÷ 59	M12	2,55
TEKS 5	3/4" x 7/16"	6020120360	12B2	15	36 ÷ 57	M12	3,00
TEKS 6	1" x 17,02	6020120380	16B2	13	52 ÷ 86	M20	5,80
TEKS 7	1"1/4 x 3/4"	6020120400	20B2	13	57 ÷ 104	M20	10,10
TEKS 7	1"1/2 x 1"	6020120420	24B2	11	63 ÷ 118	M20	10,75



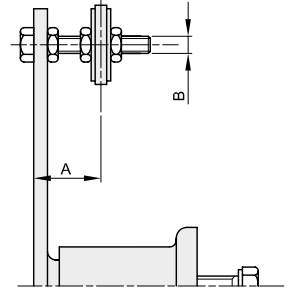
Triple

description	chain	code	ISO	teeth	A	B	Kg.
TEKS 4	3/8" x 7/32"	6020130330	06B3	15	31 ÷ 39	M10	0,95
TEKS 5	1/2" x 5/16"	6020130340	08B3	15	40 ÷ 53	M12	2,45
TEKS 6	5/8" x 3/8"	6020130350	10B3	15	53 ÷ 85	M20	4,95
TEKS 6	3/4" x 7/16"	6020130360	12B3	15	56 ÷ 83	M20	5,20
TEKS 7	1" x 17,02	6020130380	16B3	13	70 ÷ 70	M20	9,40
TEKS 7	1"1/4 x 3/4"	6020130400	20B3	13	75 ÷ 86	M20	11,70
TEKS 7	1"1/2 x 1"	6020130420	24B3	11	87 ÷ 94	M20	12,70



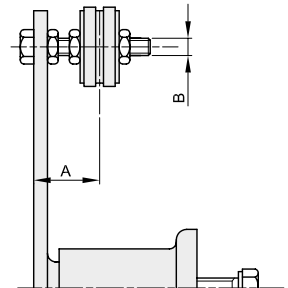
Single

description	chain	code	ISO	A	B	Kg.
TECRS 2	3/8" x 7/32"	6020210330	06B1	18 ÷ 35	M8	0,30
TECRS 3	1/2" x 5/16"	6020210340	08B1	23 ÷ 45	M10	0,56
TECRS 4	5/8" x 3/8"	6020210350	10B1	24 ÷ 44	M10	0,82
TECRS 5	3/4" x 7/16"	6020210360	12B1	30 ÷ 60	M12	2,17



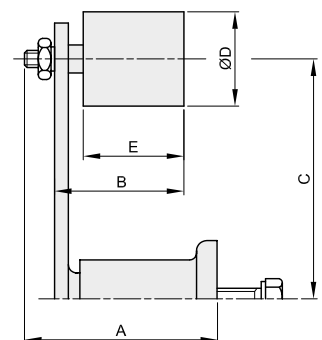
Double

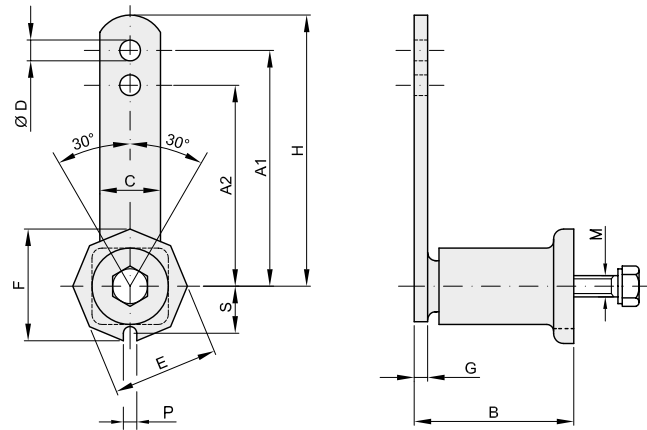
description	chain	code	ISO	A	B	Kg.
TECRS 2	3/8" x 7/32"	6020220330	06B2	25 ÷ 30	M8	0,32
TECRS 3	1/2" x 5/16"	6020220340	08B2	30 ÷ 34	M10	0,60
TECRS 4	5/8" x 3/8"	6020220350	10B2	34 ÷ 46	M10	0,90
TECRS 5	3/4" x 7/16"	6020220360	12B2	40 ÷ 52	M12	2,31



UNIVERSAL BELT TENSIONERS TYPE "TERE"

description	code	A	B	C	Ø D	E	Kg.
TERE 2	6020300301	61	43	80	30	35	0,32
TERE 3	6020300401	70	56	100	40	45	0,62
TERE 4	6020300402	88	57	100	40	45	0,85
TERE 5	6020300601	122	76	130	60	60	2,34
TERE 6	6020300801	158	109	175	80	90	4,90
TERE 7	6020300802	211	154	220	80	135	8,20

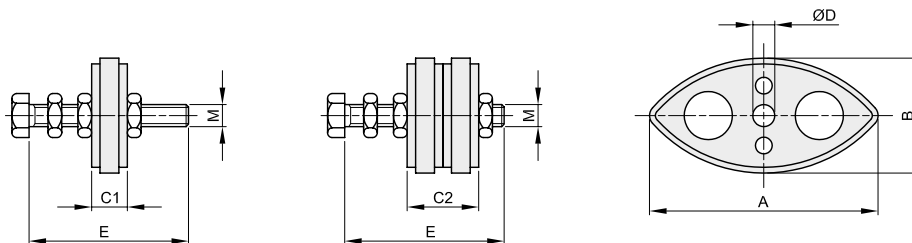




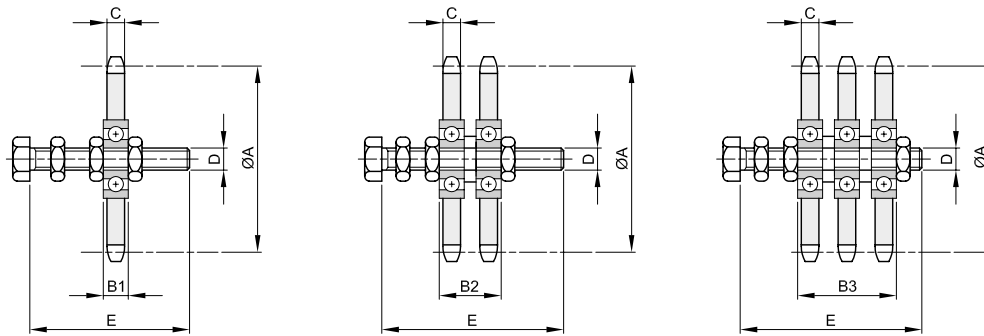
description	code	A1	A2	B	C	Ø D	E	F	G	H	Torque in N Δ 0 - 32°		M	P	S	Kg.
											A1	A2				
TE 2	602100020	80	60	52	20	8,5	35	38	5	90	0 - 90	0 - 110	M 6	8	16,5	0,25
TE 3	602100030	100	80	63	25	10,5	46	48	5	115	0 - 140	0 - 170	M 8	8,5	19,5	0,45
TE 4	602100040	100	80	78	30	10,5	56	60	6	115	0 - 320	0 - 430	M10	8,5	24,5	0,68
TE 5	602100050	130	100	108	50	12,5	72	78	8	155	0 - 820	0 - 1050	M12	10,5	34	1,70
TE 6	602100060	175	140	145	60	20,5	93	100	10	205	0 - 1500	0 - 1880	M16	12,5	42	3,70
TE 7	602100070	220	175	198	70	20,5	106	114	12	255	0 - 2500	0 - 3200	M20	12,5	50	6,50

description	code	A1	A2	B	C	Ø D	E	F	G	H	Torque in N Δ 0 - 32°		M	P	S	Kg.
											A1	A2				
TE 2 - INOX	6021000120	80	60	52	20	8,5	35	38	5	90	0 - 90	0 - 110	M 6	8	16,5	0,25
TE 3 - INOX	6021000130	100	80	63	25	10,5	46	48	5	115	0 - 140	0 - 170	M 8	8,5	19,5	0,45
TE 4 - INOX	6021000140	100	80	78	30	10,5	56	60	6	115	0 - 320	0 - 430	M10	8,5	24,5	0,68
TE 5 - INOX	6021000150	130	100	108	50	12,5	72	78	8	155	0 - 820	0 - 1050	M12	10,5	34	1,70

CHAINRIDER SET TYPE "CRS"

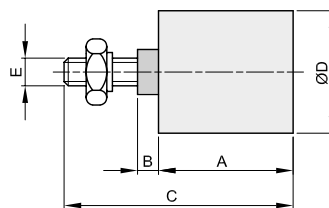


description	chain	code	ISO	A	B	C1	C2	Ø D	M	E	single Kg.	double Kg.
CRS 3/8"	3/8" x 7/32"	6023330000	06B	74	40	10,2	20,4	8	M8	45	0,05	0,07
CRS 1/2"	1/2" x 5/16"	6023340000	08B	96	50	13,9	27,8	10	M10	60	0,11	0,15
CRS 5/8"	5/8" x 3/8"	6023350000	10B	125	55	16,5	33,0	10	M10	60	0,14	0,22
CRS 3/4"	3/4" x 7/16"	6023360000	12B	147	80	19,5	39,0	12	M12	80	0,22	0,36

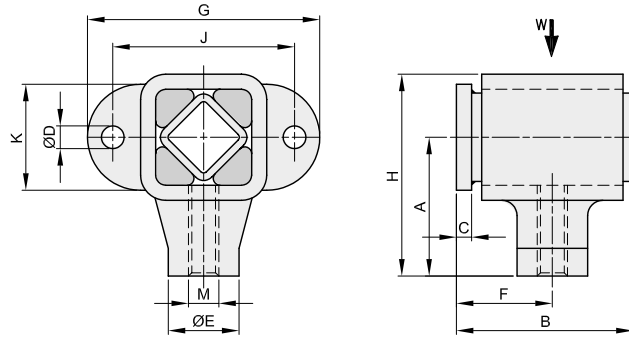


description	code	ISO	teeth	Ø A	B1	B2	B3	C	D	E	singleKg.	double Kg.	triplo Kg.
KS 3/8" x 7/32"	6022330151	06B-1-2-3	15	45,81	9	19,2	29,4	5,7	M10	60	0,15	0,20	0,25
KS 1/2" x 5/16"	6022340151	08B-1-2	15	61,08	9	22,9		7,2	M10	60	0,20	0,35	
KS 1/2" x 5/16"	6022340152	08B-1-2-3	15	61,08	12	26,0	40,0	7,2	M12	80	0,23	0,45	0,50
KS 5/8" x 3/8"	6022350151	10B-1-2-3	15	76,36	12	28,6	45,2	9,1	M12	80	0,37	0,60	0,95
KS 5/8" x 3/8"	6022350152	10B-1-2-3	15	76,36	15	31,5	48,2	9,1	M20	120	0,70	1,00	1,25
KS 3/4" x 7/16"	6022360151	12B-1-2	15	91,63	12	31,5		11,5	M12	80	0,60	1,05	
KS 3/4" x 7/16"	6022360152	12B-1-2-3	15	91,63	15	34,5	54,0	11,5	M20	120	0,90	1,35	1,50
KS 1" x 17,02	6022380131	16B-1-2-3	13	106,14	15	46,9	78,8	16,2	M20	120	1,30	2,10	2,90
KS 1 1/4" x 3/4"	6022400131	20B-1-2-3	13	132,67	15	51,5	88,0	18,5	M20	140	2,05	3,60	5,20
KS 1 1/2" x 1"	6022420111	24B-1-2-3	11	135,23	15	63,4	111,8	24,1	M20	160	2,40	4,25	6,20

ROLLERSET TYPE "RE"

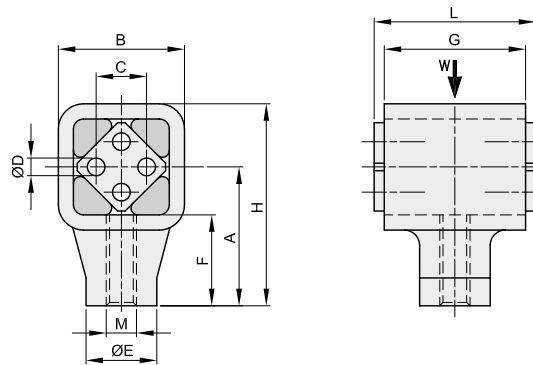


description	code	A	B	C	Ø D	E	Kg.
RE 2	6023000301	35	3	51	30	M8	0,07
RE 3	6023000401	45	6	67	40	M10	0,17
RE 4	6023000401	45	6	67	40	M10	0,17
RE 5	6023000601	60	7,5	89	60	M12	0,39
RE 6	6023000801	90	9	127	80	M20	1,20
RE 7	6023000802	135	7	167	80	M20	1,70



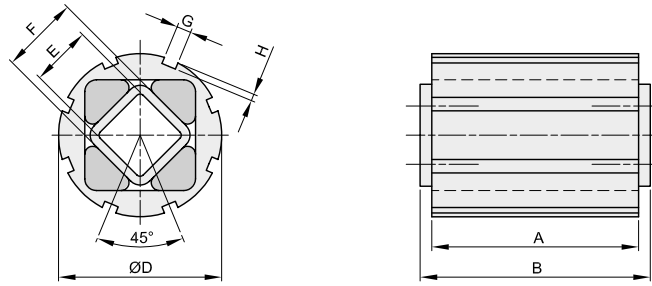
description	code	A	B	C	ØD	E	F	G	H	J	K	M	W load max in N	Fr Freq. max in min ⁻¹	Kg.
OM 4 R	6024000041	40	61	5	9	24	33	82	58	60	30	M12 R	190	1250	0,28
OM 4 L	6024000042	40	61	5	9	24	33	82	58	60	30	M12 L	190	1250	0,28
OM 5 R	6024000051	55	75	6	11	30	41	108	81	80	45	M16 R	380	780	0,58
OM 5 L	6024000052	55	75	6	11	30	41	108	81	80	45	M16 L	380	780	0,58
OM 6 R	6024000061	80	98	8	13	40	53	130	115	100	60	M20 R	780	760	1,45
OM 6 L	6024000062	80	98	8	13	40	53	130	115	100	60	M20 L	780	760	1,45
OM 7 R	6024000071	90	118	8	17	50	63	170	135	130	70	M24 R	1550	750	2,54
OM 7 L	6024000072	90	118	8	17	50	63	170	135	130	70	M24 L	1550	750	2,54
OM 8 R	6024000081	100	140	10	17	60	75	180	147	140	80	M36 R	2400	580	6,05
OM 8 L	6024000082	100	140	10	17	60	75	180	147	140	80	M36 L	2400	580	6,05

CRANKDRIVE UNIT TYPE "DH"



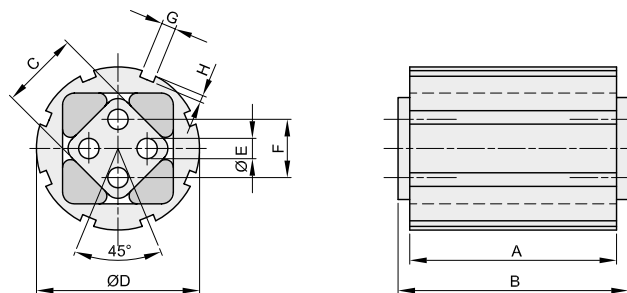
description	code	A	B	C	ØD	E	F	G	H	L	M	W force accel. in N	ne Vel. of rotation in min ⁻¹	Kg.
DH 4-50 R	6025004501	40	36	12	6	24	25	50	58	55	M12 R	380	1250	0,20
DH 4-50 L	6025004502	40	36	12	6	24	25	50	58	55	M12 L	380	1250	0,20
DH 5-60 R	6025005601	55	52	20	8	30	35	60	81	65	M16 R	960	1200	0,52
DH 5-60 L	6025005602	55	52	20	8	30	35	60	81	65	M16 L	960	1200	0,52
DH 6-80 R	6025006801	80	72	25	10	40	52	80	115	90	M20 R	1900	780	1,48
DH 6-80 L	6025006802	80	72	25	10	40	52	80	115	90	M20 L	1900	780	1,48
DH 7-100 R	6025071001	90	90	35	12	50	55	100	135	110	M24 R	3400	750	2,65
DH 7-100 L	6025071002	90	90	35	12	50	55	100	135	110	M24 L	3400	750	2,65
DH 8-120 R	6025081201	100	94	40	M12x30	60	64	120	147	130	M36 R	5800	580	6,30
DH 8-120 L	6025081202	100	94	40	M12x30	60	64	120	147	130	M36 L	5800	580	6,30
DH 9-200 R	6025092001	120	120	45	M16x25	80	75	200	180	210	M42 R	11500	330	17,70
DH 9-200 L	6025092002	120	120	45	M16x25	80	75	200	180	210	M42 L	11500	330	17,70
DH 9-300 R	6025093001	120	120	45	M16x25	80	75	300	180	310	M42 R	17500	300	26,50
DH 9-300 L	6025093002	120	120	45	M16x25	80	75	300	180	310	M42 L	17500	300	26,50

RUBBER SUSPENSION UNIT TYPE "LTK-S"

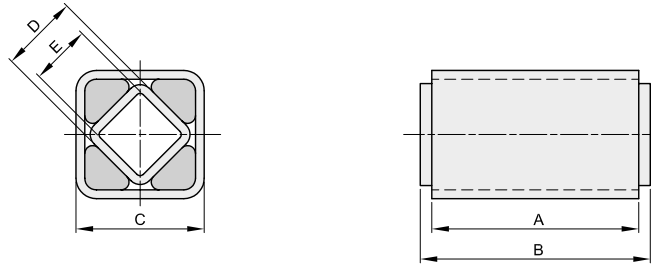


description	code	Torque M in Nm at 32°	A	B	Ø D	E	F	G	H	Kg.
LTK-S 5-40	6029005040	56	40	45	62	22	27	6	3	0,30
LTK-S 5-60	6029005060	85	60	65	62	22	27	6	3	0,40
LTK-S 5-100	6029005100	140	100	105	62	22	27	6	3	0,65
LTK-S 6-60	6029006060	160	60	70	80	30	38	7	3,5	0,70
LTK-S 6-80	6029006080	215	80	90	80	30	38	7	3,5	0,90
LTK-S 6-120	6029006120	320	120	130	80	30	38	7	3,5	1,30

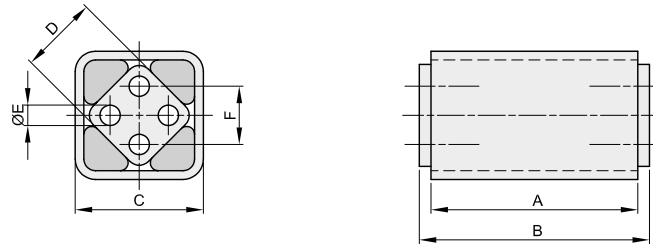
RUBBER SUSPENSION UNIT TYPE "LTK-A"



description	code	Torque M in Nm at 32°	A	B	C	Ø D	Ø E	F	G	H	Kg.
LTK-A 5-40	6030005040	56	40	45	27	62	8	20	6	3	0,25
LTK-A 5-60	6030005060	85	60	65	27	62	8	20	6	3	0,35
LTK-A 5-100	6030005100	140	100	105	27	62	8	20	6	3	0,60
LTK-A 6-60	6030006060	160	60	70	38	80	10	25	7	3,5	0,60
LTK-A 6-80	6030006080	215	80	90	38	80	10	25	7	3,5	0,80
LTK-A 6-120	6030006120	320	120	130	38	80	10	25	7	3,5	1,20

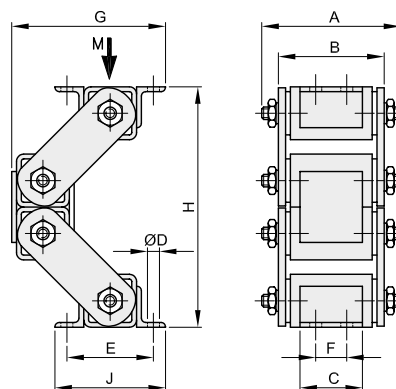


description	code	Torque M in Nm at 32°	A	B	C	D	E	Kg.
LTS 3-25	6027003025	8	25	30	27	15	11	0,08
LTS 3-40	6027003040	13	40	45	27	15	11	0,13
LTS 3-60	6027003060	19	60	65	27	15	11	0,19
LTS 4-30	6027004030	20	30	35	32	18	12	0,13
LTS 4-50	6027004050	34	50	55	32	18	12	0,22
LTS 4-80	6027004080	54	80	85	32	18	12	0,33
LTS 5-40	6027005040	56	40	45	45	27	22	0,27
LTS 5-60	6027005060	85	60	65	45	27	22	0,40
LTS 5-100	6027005100	140	100	105	45	27	22	0,66
LTS 6-60	6027006060	160	60	70	60	38	30	0,68
LTS 6-80	6027006080	215	80	90	60	38	30	0,90
LTS 6-120	6027006120	320	120	130	60	38	30	1,35
LTS 7-80	6027007080	315	80	90	72	45	35	1,20
LTS 7-100	6027007100	390	100	110	72	45	35	1,46
LTS 7-150	6027007150	580	150	160	72	45	35	2,16
LTS 8-120	6027008120	720	120	130	80	50	40	2,20
LTS 8-200	6027008200	1300	200	210	80	50	40	3,50
LTS 8-300	6027008300	2000	300	310	80	50	40	5,30

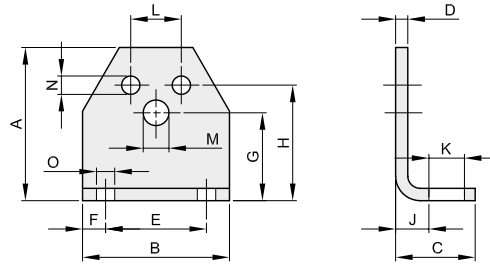


description	code	Torque M in Nm at 32°	A	B	C	D	Ø E	F	Kg.
LTA 4-30	6028004030	20	30	35	32	18	6	12	0,10
LTA 4-50	6028004050	34	50	55	32	18	6	12	0,15
LTA 4-80	6028004080	54	80	85	32	18	6	12	0,26
LTA 5-40	6028005040	56	40	45	45	27	8	20	0,26
LTA 5-60	6028005060	85	60	65	45	27	8	20	0,37
LTA 5-100	6028005100	140	100	105	45	27	8	20	0,62
LTA 6-60	6028006060	160	60	70	60	38	10	25	0,61
LTA 6-80	6028006080	215	80	90	60	38	10	25	0,80
LTA 6-120	6028006120	320	120	130	60	38	10	25	1,15
LTA 7-80	6028007080	315	80	90	72	45	12	35	1,01
LTA 7-100	6028007100	390	100	110	72	45	12	35	3,00
LTA 7-150	6028007150	580	150	160	72	45	12	35	4,45
LTA 8-120	6028008120	760	120	130	80	50	M12x40	40	1,85
LTA 8-200	6028008200	1370	200	210	80	50	M12x40	40	3,02
LTA 8-300	6028008300	2050	300	310	80	50	M12x40	40	4,48

OSCILLATING-MOUNTINGS TYPE "HC"

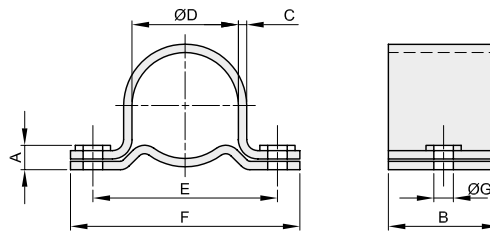


description	code	A	B	C	Ø D	E	F	G	G max	H	H min	J	LAOD M in N	Kg.
HC 6	6023500006	138	117	65	13	100	40	180	205	290	190	120	500 - 1500	6,90
HC 7	6023500007	168	142	80	13	115	48	201	225	335	235	135	1100 - 3200	13,50
HC 8	6023500008	195	164	100	17	130	60	224	260	360	250	160	2400 - 7000	20,50



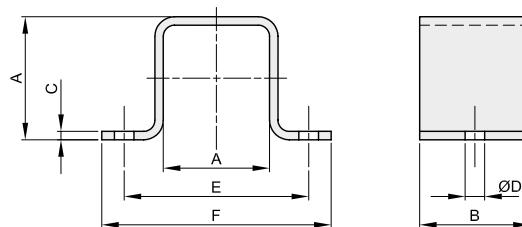
description	code	adatto a type		A	B	C	D	E	F	G	H	J	K	L	M	N	O	Kg.
		TE...	LT...															
MA 2	6031000002	2	3	46	50	30	4	30	10	27	35	12	13	10	6,5	5,5	7	0,09
MA 3	6031000003	3	4	58	60	32	6	40	10	34	44	14	13	12	8,5	6,5	7	0,19
MA 4	6031000004	4	5	75	70	38	6	50	10	45	55	16	16	20	10,5	8,5	9,5	0,30
MA 5	6031000005	5	6	98	90	52	8	65	12,5	58	75	21	22	25	12,5	10,5	11,5	0,70
MA 6	6031000006	6	7	116	110	55	8	80	15	66	85	21	24	35	16,5	12,5	14	0,90
MA 7	6031000007	7	8	140	140	66	10	100	20	80	110	26	30	40	20,5	12,5	18	1,80

MOUNTING CLAMP TYPE "CK"



description	code	A	B	C	Ø D	E	F	Ø G	Kg.
CK 5	6032000005	10	40	3	62	92	125	10,5	0,30
CK 6	6032000006	11	40	3	80	115	150	12,5	0,45

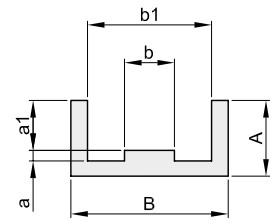
MOUNTING CLAMP TYPE "MS"



description	code	A	B	C	Ø D	E	F	Kg.
MS 3	6033000003	27	25	2	6,5	50	65	0,04
MS 4	6033000004	32	30	3	8,5	60	80	0,09
MS 5	6033000005	45	35	3	10,5	80	105	0,16
MS 6	6033000006	60	40	5	12,5	100	125	0,29
MS 7	6033000007	72	45	5	12,5	115	145	0,45
MS 8	6033000008	80	50	6	17	130	170	0,68

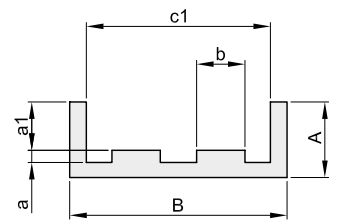
PROFILE "E" FOR CHAIN - SINGLE - length 2 meters

type	chain	code	ISO	B	A	a	a1	b	b1	Kg./Mt.
E 0	3/8" x 7/32"	6011043301	06B1	25	10	1,5	4,35	5,4	15	0,17
E 1	1/2" x 5/16"	6011043401	08B1	30	15	2,2	7,17	7,4	20	0,27
E 2	5/8" x 3/8"	6011043501	10B1	33	20	2,6	9,45	9,2	23	0,39
E 3	3/4" x 7/16"	6011043601	12B1	38	20	2,4	11,11	11,3	28	0,39
E 4	1" x 17,02	6011043801	16B1	51	25	3,5	16,48	16,5	41	0,46



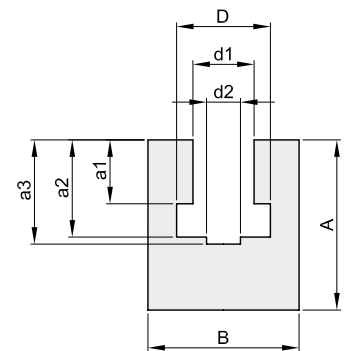
PROFILE "E" FOR CHAIN - DOUBLE - length 2 meters

type	chain	code	ISO	B	A	a	a1	b	c1	Kg./Mt.
E 0.2	3/8" x 7/32"	6011053301	06B2	36	15	1,5	4,35	5,4	26	0,43
E 1.2	1/2" x 5/16"	6011053401	08B2	45	20	2,2	7,17	7,4	35	0,59
E 2.2	5/8" x 3/8"	6011053501	10B2	50	25	2,6	9,45	9,2	40	0,77
E 3.2	3/4" x 7/16"	6011053601	12B2	56	25	2,4	11,11	11,3	46	0,80
E 4.2	1" x 17,02	6011053801	16B2	85	30	3,5	16,48	16,5	75	1,12



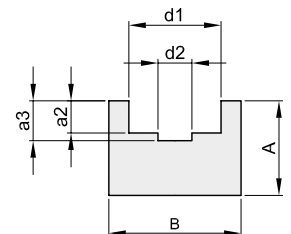
PROFILE "BL" FOR CHAIN - SINGLE - length 2 meters

type	chain	code	ISO	B	A	a1	a2	a3	d1	D	d2	Kg./Mt.
BL 0	3/8" x 7/32"	6011073301	06B1	20	25	5,6	8,7	10,0	6,6	9,3	4,0	0,43
BL 1	1/2" x 5/16"	6011073401	08B1	24	30	7,6	11,5	13,5	8,7	12,8	5,0	0,55
BL 2	5/8" x 3/8"	6011073501	10B1	30	35	9,5	13,5	14,8	10,4	15,4	6,0	0,83
BL 3	3/4" x 7/16"	6011073601	12B1	40	35	11,5	15,9	17,5	12,3	16,9	7,0	1,10
BL 4	1" x 17,02	6011073801	16B1	40	45	16,9	25,7	26,8	16,1	24,4	9,0	1,22
* BL 5	1" 1/4 x 3/4"	6011074001	20B1	50	50	19,4	29,3	31,2	19,3	27,5	11,0	
* BL 6	1" 1/2 x 1"	6011074201	24B1	60	60	25,2	38,2	40,1	25,7	36,5	16,0	
* BL 7	1" 3/4 x 1" 1/4	6011074401	28B1	60	70	30,8	46,9	48,9	28,3	41,5	17,0	
* BL 8	2" x 1" 1/4	6011074601	32B1	70	75	30,8	47,3	53,0	29,6	44,5	19,0	



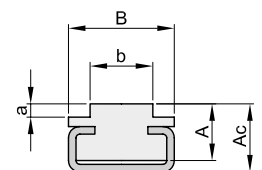
PROFILE "U" FOR CHAIN - SINGLE - length 2 meters

type	chain	code	ISO	B	A	a2	a3	d1	d2	Kg./Mt.
U 0	3/8" x 7/32"	6011083301	06B1	20	15	2,8	4,2	9,2	4	0,26
U 1	1/2" x 5/16"	6011083401	08B1	25	15	3,5	4,8	12,7	5	0,31
U 2	5/8" x 3/8"	6011083501	10B1	25	15	3,6	5,1	15,2	6	0,30
U 3	3/4" x 7/16"	6011083601	12B1	25	20	3,9	5,7	16,7	7	0,40
U 4	1" x 17,02	6011083801	16B1	35	25	8,4	10,0	24,4	9	0,63



PROFILE "CT" FOR CHAIN - SINGLE - length 2 meters

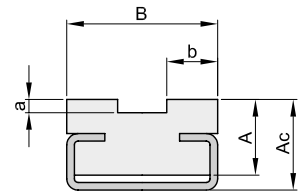
type	chain	code	ISO	B	A	a	b	Ac	Kg./Mt.
T 0 C3 A 15	3/8" x 7/32"	6011113301	06B1	20	15	1,5	5,4	17	0,69
T 1 C3 A 15	1/2" x 5/16"	6011113401	08B1	20	15	2,2	7,4	17	0,68
T 2 C3 A 15	5/8" x 3/8"	6011113501	10B1	20	15	2,6	9,2	17	0,67
T 3 C3 A 15	3/4" x 7/16"	6011113601	12B1	20	15	2,4	11,3	17	0,68
T 4 C5 A 15	1" x 17,02	6011113801	16B1	28	15	3,5	16,5	18	0,93
T 5 C9 A 20	1 1/4" x 3/4"	6011114001	20B1	38	20	4,3	19,0	27	1,51



manufactured on request.

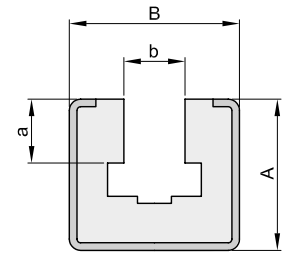
PROFILE "CT" FOR CHAIN - DOUBLE - length 2 meters

type	chain	code	ISO	B	A	a	b	Ac	Kg./Mt.
T 0.2 C3 A 15	3/8" x 7/32"	6011123301	06B2	15,7	15	1,5	5,4	17	0,66
T 1.2 C3 A 15	1/2" x 5/16"	6011123401	08B2	21,4	15	2,2	7,4	17	0,70
T 2.2 C5 A 15	5/8" x 3/8"	6011123501	10B2	25,9	15	2,6	9,2	19	0,95
T 3.2 C5 A 15	3/4" x 7/16"	6011123601	12B2	30,7	15	2,4	11,3	19	0,97
T 4.2 C9 A 20	1" x 17,02	6011123801	16B2	48,3	20	3,5	16,5	27	1,61



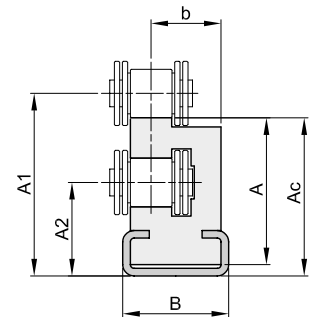
PROFILE "C 10 P" FOR CHAIN - SINGLE - length 2 meters

type	chain	code	ISO	B	A	b	a	Kg./Mt.
C 10.0	3/8" x 7/32"	6011143301	06B1	30	24	6,6	5,6	1,39
C 10.1	1/2" x 5/16"	6011143401	08B1	30	24	8,7	7,6	1,33
C 10.2	5/8" x 3/8"	6011143501	10B1	30	24	10,4	9,5	1,29
C 10.3	3/4" x 7/16"	6011143601	12B1	30	24	12,3	11,5	1,23
C 11.4	1" x 17,02	6011143801	16B1	45	40	16,1	16,9	2,92



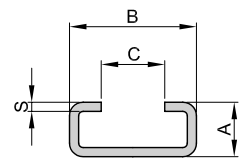
PROFILE "COMBI A-R" FOR CHAIN - SINGLE - length 2 meters

type	chain	code	ISO	Prof. met.	A	B	A1	A2	Ac	b	Kg./Mt.
COMBI 0	3/8" x 7/32"	6011153301	06B1	C 3	26,4	20	31,6	19,5	28,4	14,5	0,84
COMBI 1	1/2" x 5/16"	6011153401	08B1	C 3	28,0	20	34,8	18,9	30,5	16,5	0,81
COMBI 2	5/8" x 3/8"	6011153501	10B1	C 3	34,4	20	41,1	21,2	36,0	15,5	0,87
COMBI 3	3/4" x 7/16"	6011153601	12B1	C 5	38,5	28	47,5	24,8	41,5	18,5	1,36
COMBI 4	1" x 17,02	6011153801	16B1	C 9	52,4	38	69,4	45,1	61,4	25,0	2,25



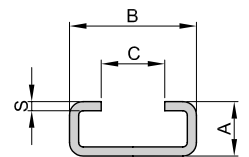
PROFILE METAL - GALVANIZED - length 2 meters

type	code	A	B	C	S	Kg./Mt.
C3	6011180003	10	20	10	1,5	0,46
C5	6011180005	12	28	14	1,5	0,64
C9	6011180009	18	38	22	1,5	0,93
C10	6011180010	24	30	20	1,5	0,89
C11	6011180011	40	45	31	2	1,96



PROFILE METAL - INOX - length 2 meters

type	code	A	B	C	S	Kg./Mt.
C3	6011190003	10	20	10	1,5	0,46
C5	6011190005	12	28	14	1,5	0,64
C9	6011190009	18	38	22	1,5	0,93
C10	6011190010	24	30	20	1,5	0,89



POLYETHYLENE TECHNICAL CHARACTERISTICS

Material	: PE UHMW Very high density polyethylene.	TEMPERATURE OF USE	: Up to 80° C
SPECIFIC WEIGHT	: 0,94 gr/cm³	COEFFICIENT OF THERMAL EXPANSION	: mm/° c 2 x 10-4 (2 mm/mt per ogni 10° C)
HARDNESS	: Shore D 64/67		